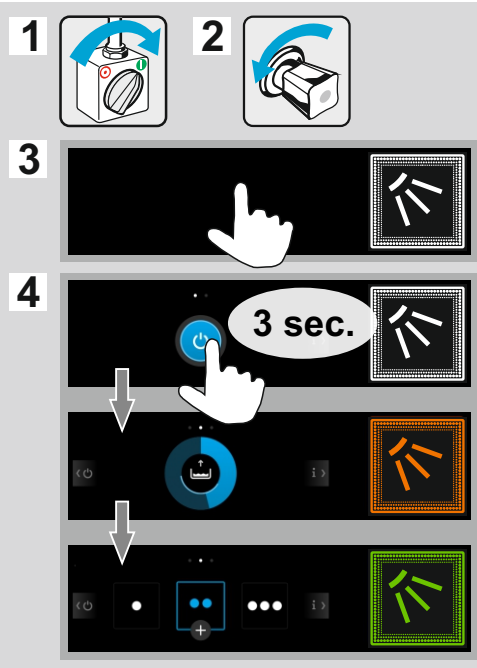
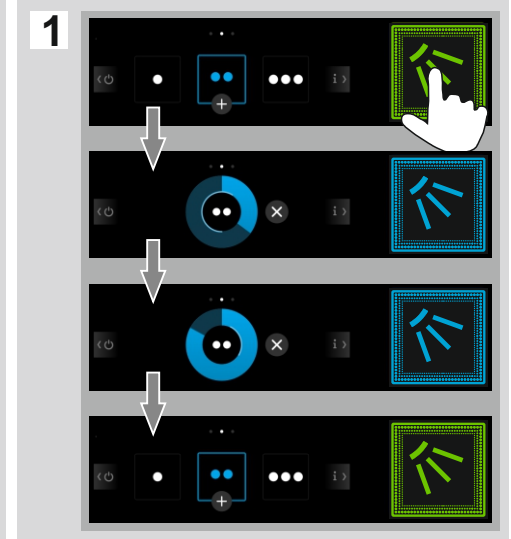


# UC-Serie

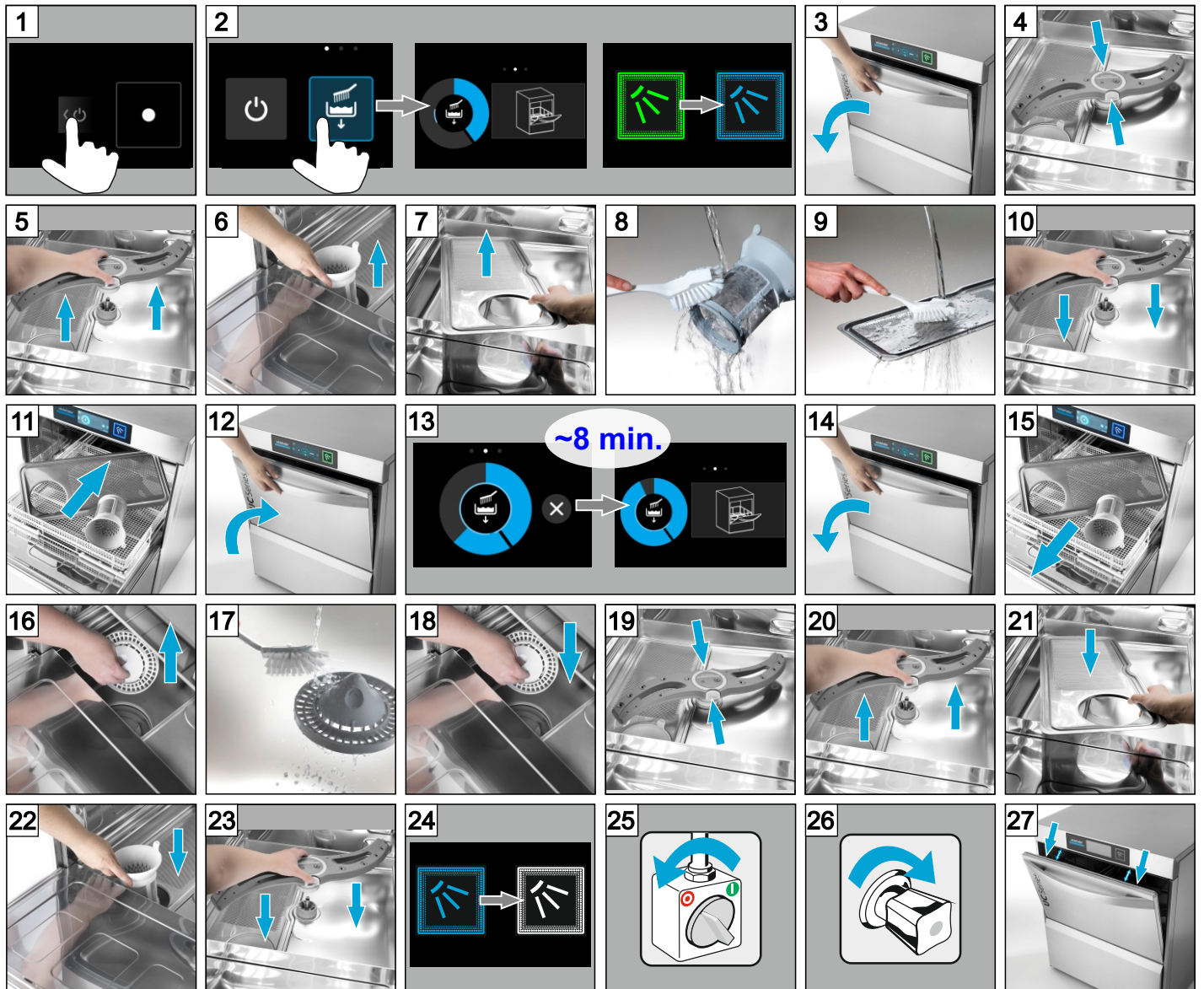
## Maschine einschalten



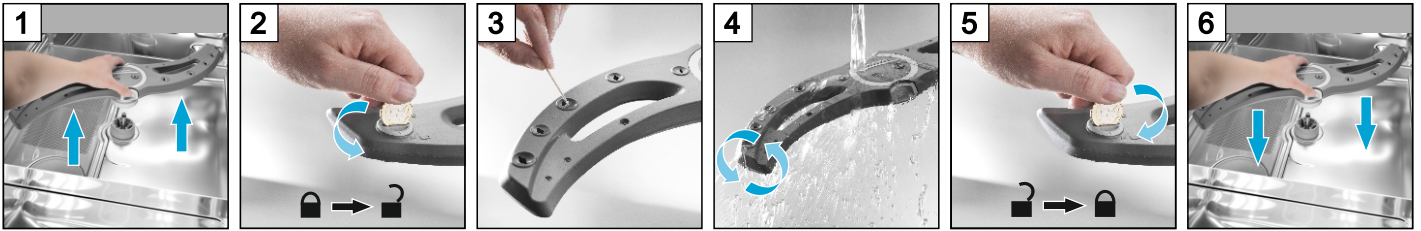
## Spülen



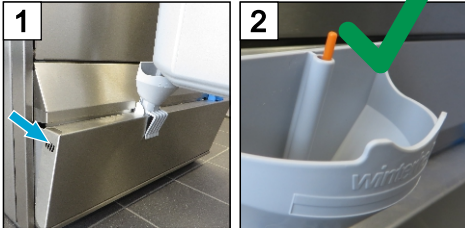
## Ausschalten + Reinigen



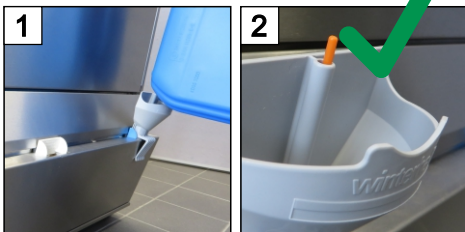
## Spülfelder reinigen



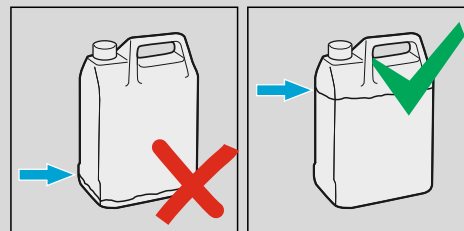
### Reiniger nachfüllen



### Klarspüler nachfüllen



### Kanister tauschen



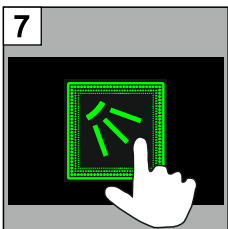
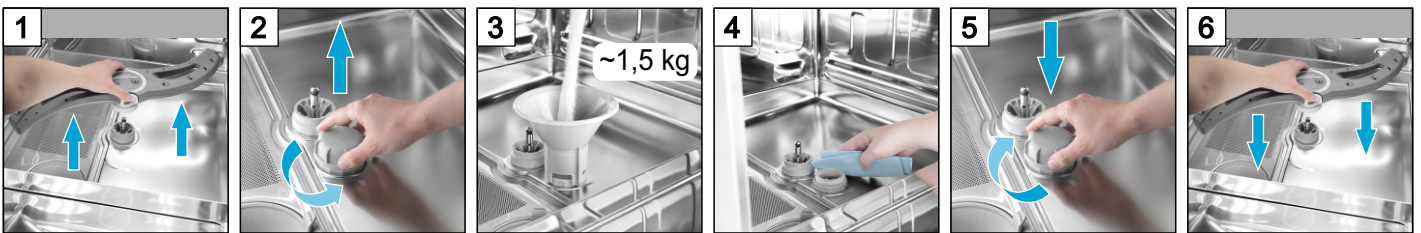
schwarz



blau



### Salz nachfüllen



Mehr Informationen:  
Siehe Betriebsanleitung  
[www.winterhalter.com/download-centre](http://www.winterhalter.com/download-centre)



Winterhalter Gastronom GmbH  
88074 Meckenbeuren  
Tel. 07542 402-0  
[info@winterhalter.com](mailto:info@winterhalter.com)  
[www.winterhalter.com](http://www.winterhalter.com)